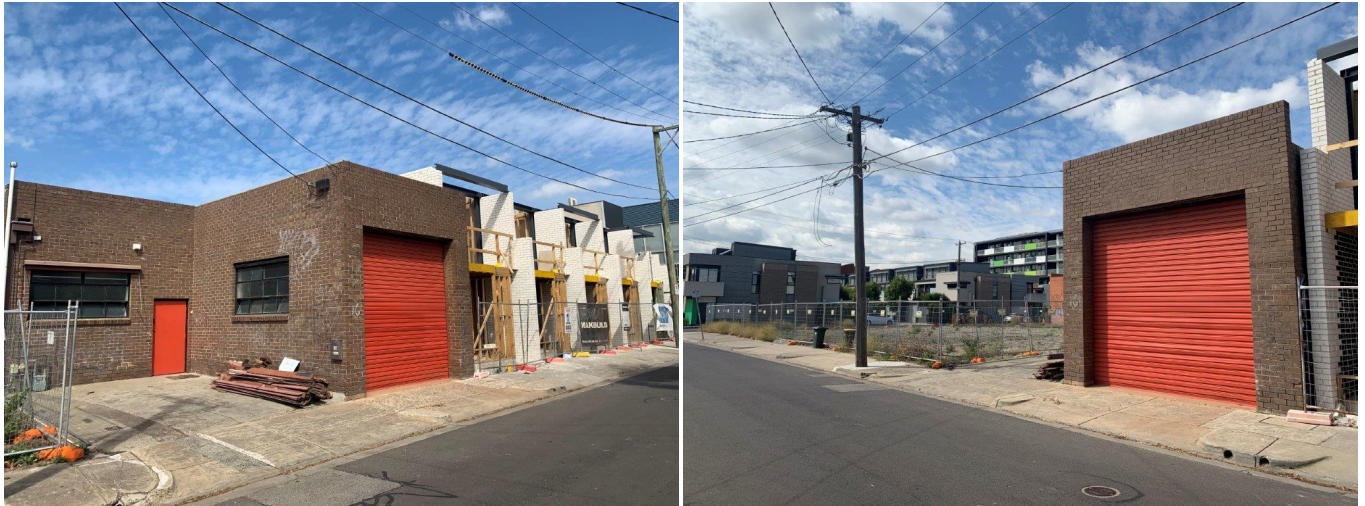




Sold

16 Lobb Street, Brunswick VIC





GREAT EXPECTATIONS

Light, bright and airy, this boutique Brunswick warehouse is strategically located between Lygon Street & Sydney Road, with a north-facing perspective, a beautiful outlook across a row of terraces and excellent natural light through north-facing windows and overhead skylights.

Features include:

- > 9.8m frontage to Lobb Street
- > 3-phase power & gas
- > Concrete floor
- > Goods / roller-door access
- > Settlement terms: 30/60/90 days, 10% deposit
- > Vacant Possession
- > BUILDING: 175m² (approximately)
- > LAND: 208m² (approximately)

Contract type	Sale
Property Type	Industrial/Warehouse, Commercial
Price	FREESTANDING INNER-CITY WAREHOUSE
Richard Miglic Owner Principal	0418 556 900